

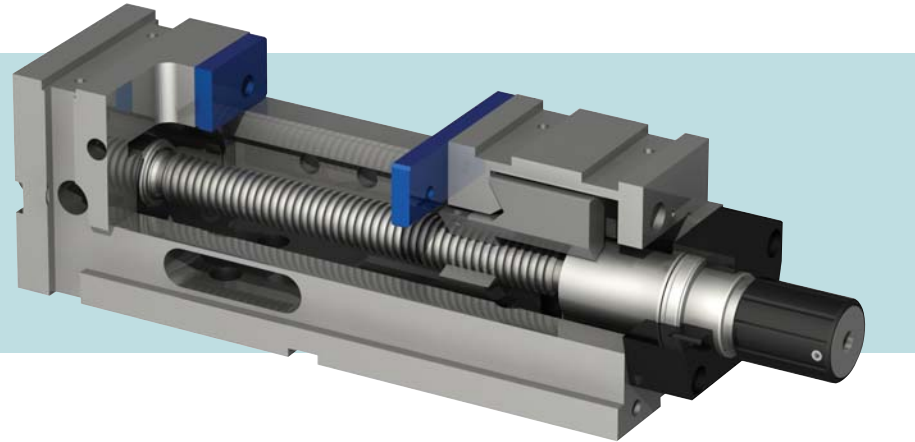
HIGH PRESSURE MANUAL vices for all

types of machines

Arnold Mat MECHANICAL

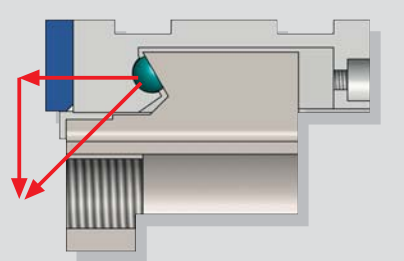
ARNOLD MAT MECHANICAL

vices, maintain their length irrespective of the size of the part, being specially ideal for use in machining centres.



- Possible working positions: supported on the base, on the side or on the head vertically.
- Suitable for working in horizontal and vertical machining centres.
- Grinding of all surfaces with a parallelism and perpendicularity of 0.02 mm.
- 0.01 mm clamping repeatability.
- Monoblock design avoids deformations due to high pressure and offers great rigidity.
- Side windows to enable the interior cleaning of the vices.
- Fitted with high pressure mechanical intensifier.
- The clamping force is 2.5/4/5 tons, depending on the size.
- Power regulator optional.
- The constant clamping force avoids having to reposition the part from one day to the next. This characteristic makes it ideal for long term machining.
- Angle driver for handle clearance available.

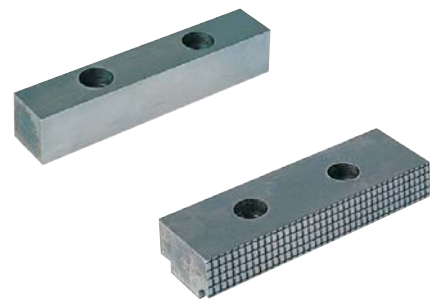
Semi-sphere



The ARNOLD MAT has a descending clamp system to avoid that the clamped part lifts up. This is a semi-sphere installed between the moveable jaw and the spindle shoe.

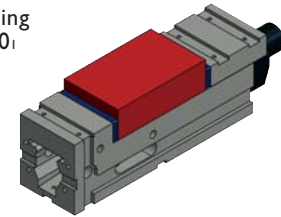
When the clamping force is carried out by the spindle, this pressure is divided in two directions, one of which pulls down on the work-piece.

- This high pressure mechanical spindle does not require any maintenance, as long as optimal coolant liquids are used.
- The ARNOLD mat mechanical vice has two clamping possibilities, either towards the fixed head or the opposite direction. Normal clamping is towards the fixed head (this is how the vice is supplied). Should clamping towards the interior be needed, just place the spindle on the rear part of the fixed head, clamped by four screws. Then rotate the spindle shoe and the moveable jaw.

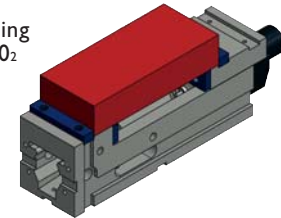


Clamping possibilities

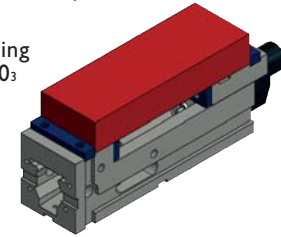
Clamping field 0₁



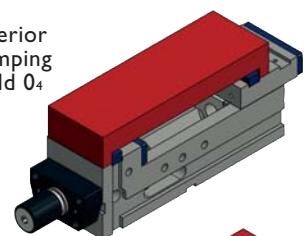
Clamping field 0₂



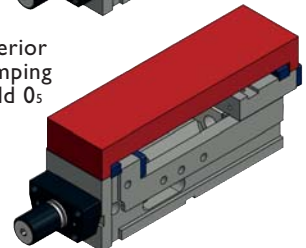
Clamping field 0₃



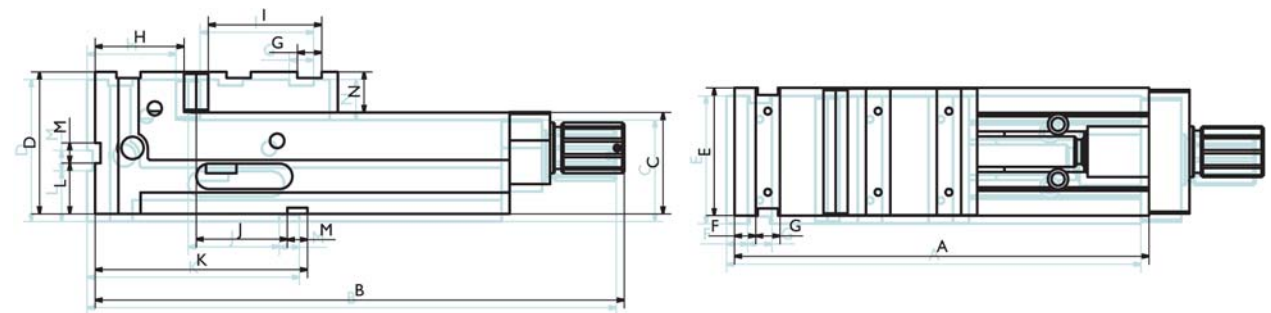
Interior clamping field 0₄



Interior clamping field 0₅



Size	090	125	160	200
Arnold Mat Mechanical	020 120 090	020 120 125	020 120 160	020 120 200
Arnold Mat Mechanical with regulator		020 130 125	020 130 160	020 130 200
Clamping force (kg)	2.500	4.000	5.000	5.000
A	300	410	570	570
B	387	526	679	679
B (with regulator)		548	708	708
C - 0,02	75	100	110	110
D	115	140	160	173
E	91	126	161	201
F	21	21	21	21
G	20	24	24	24
H	58	88	99	99
I	55	112	112	112
J + 0,02	40	90	115	111
K	130	210	250	250
L	40	50	60	60
M H7	20	20	20	20
N	40	40	50	63
Weight (kg)	16	35	70	93
Clampings	090	125	160	200
Clamping field 0 ₁	0 - 132	0 - 200	0 - 314	0 - 314
Clamping field 0 ₂	76 - 208	80 - 285	106 - 420	106 - 420
Clamping field 0 ₃		155 - 355	174 - 488	174 - 488
Clamping field 0 ₄	116 - 248	133 - 333	154 - 468	154 - 468
Clamping field 0 ₅		203 - 403	222 - 536	222 - 536



Set supplied

- base body
- mechanical spindle
- 1 set of plain jaws
- 1 handle
- 4 end clamps
- instruction manual

