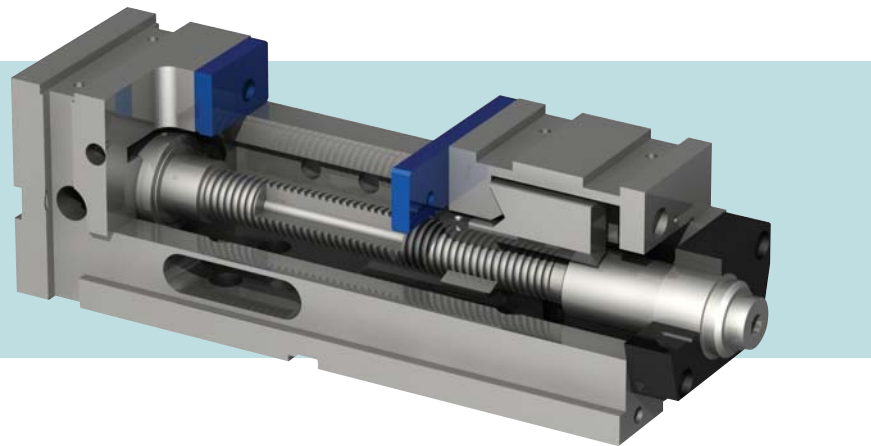


HIGH PRESSURE MANUAL vices for all

types of machines

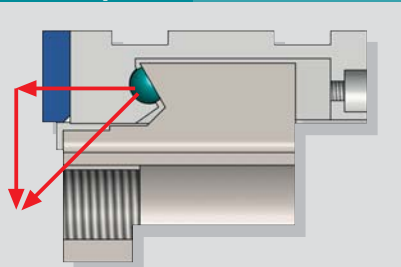
Arnold Mat HYDRAULIC

High Pressure ARNOLD MAT HYDRAULIC vices, maintain their length irrespective of the size of the part, being specially ideal for use in machining centres.



- Possible working positions: supported on the base, on the side or on the head vertically.
- Suitable for working in horizontal and vertical machining centres.
- All surfaces ground with a parallelism and perpendicularity of 0.02 mm.
- 0.01 mm clamping repeatability.
- Monoblock design avoids deformations due to high pressure and offers great rigidity.
- Side windows to enable the interior cleaning of the vices.
- Fitted with a high pressure hydraulic intensifier incorporated into the spindle, which maintains the clamping force for hours.
- The clamping force is 2.5/4/5 tons depending on the size.
- Power regulator optional.
- Ideal for long lasting machining.
- Angle driver for handle clearance available.

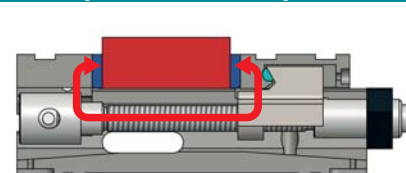
Semi-sphere



The ARNOLD MAT has a descending clamp system to avoid that the clamped part lifts up. This is a semi-sphere installed between the moveable jaw and the spindle shoe.

When the clamping force is carried out by the spindle, this pressure is divided in two directions, one of which pulls down on the work-piece.

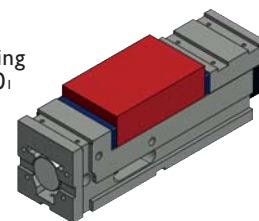
Compensated clamp



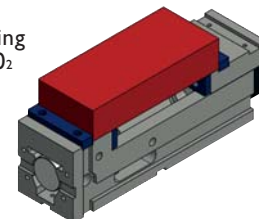
- These vices provide an enveloping clamp. The spindle does not push the moveable jaw from the end clamp, but it pulls it from the head.
- This effect means that the head of the vice and the work-piece suffer less deformation stress with high pressure.

Clamping possibilities

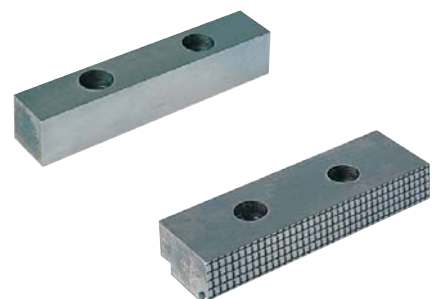
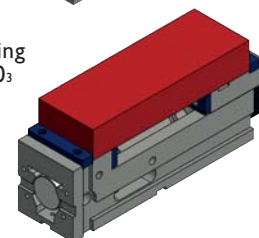
Clamping field 0₁



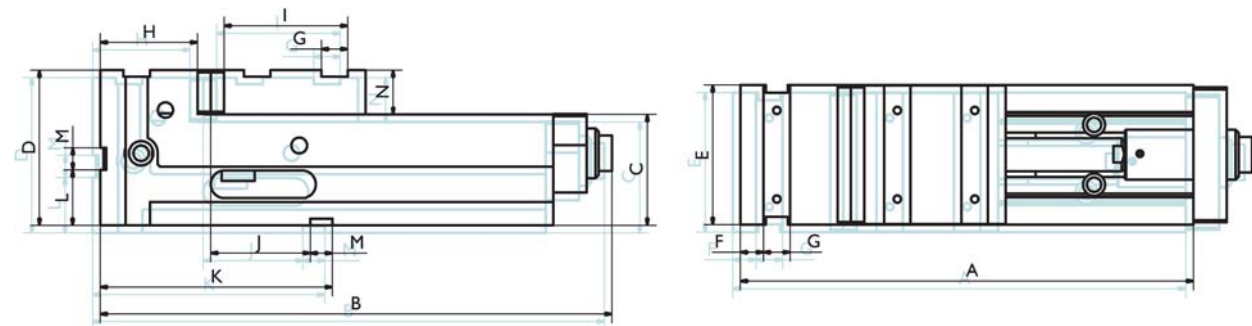
Clamping field 0₂



Clamping field 0₃



Size	090	125	160	200
Arnold Mat Hydraulic	020 200 090	020 200 125	020 200 160	020 200 200
Arnold Mat Hydraulic with regulator		020 210 125	020 210 160	020 210 200
Clamping force (kg)	2.500	4.000	5.000	5.000
A	300	410	570	570
B	356	460	620	620
B (with regulator)		527	687	687
C - 0,02	75	100	110	110
D	115	140	160	173
E	91	126	161	201
F	21	21	21	21
G	20	24	24	24
H	58	88	99	99
I	55	112	112	112
J + 0,02	40	90	115	111
K	130	210	250	250
L	40	50	60	60
M H7	20	20	20	20
N	40	40	50	63
Weight (kg)	16	35	70	93
Clampings	090	125	160	200
Clamping field 0 ₁	0 - 132	0 - 200	0 - 314	0 - 314
Clamping field 0 ₂	76 - 208	80 - 285	106 - 420	106 - 420
Clamping field 0 ₃		155 - 355	174 - 488	174 - 488



Set supplied

- base body
- hydraulic spindle
- 1 set of plain jaws
- 1 handle
- 4 end clamps
- instruction manual

